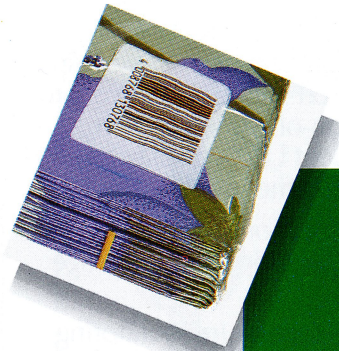


# dübi-tech Printer® hot foil printers

SWISS MADE

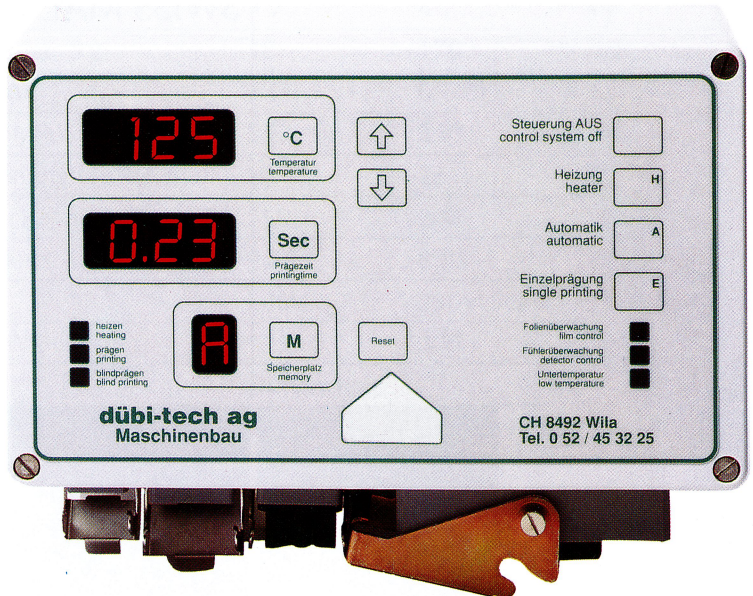




# Precision on the running line

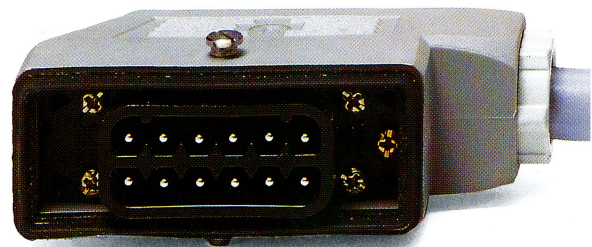
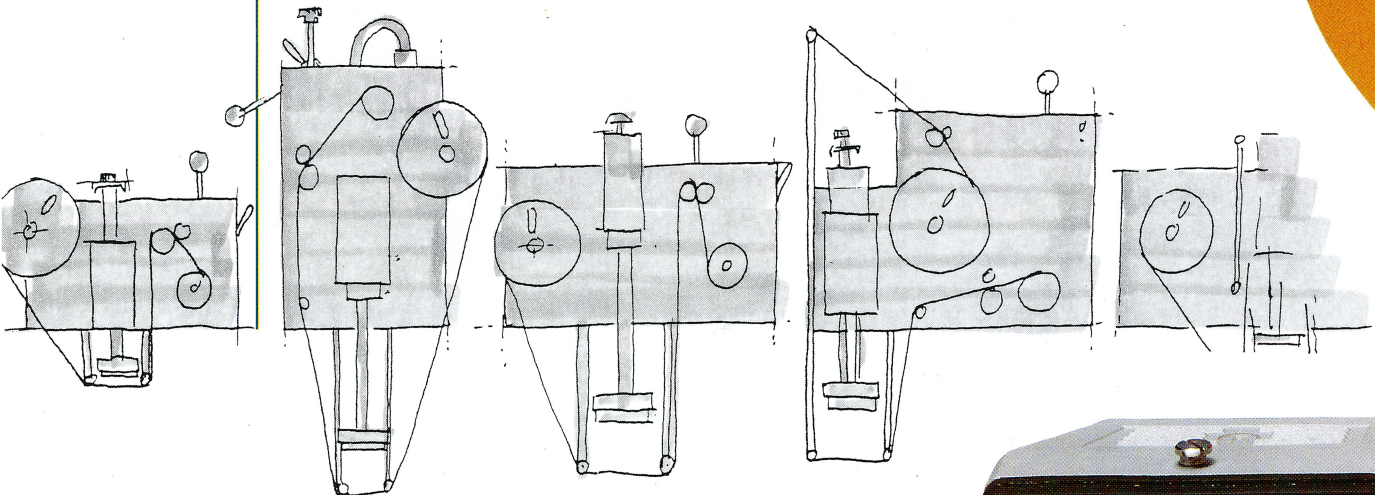
the particular features of dübi-tech hot-foil printers are:

- perfectly focused print suitable for: bar code marking (HP-80/100), with black, white or coloured foil on all kinds of packaging materials like: PP, PAE, PA, paper and aluminium compounds, cellophane, card boards, laminates etc.
- electronic digital control unit equipped with short-stroke-film keyboard, automatic on-off control system, 3 independent LED's display for temperature, time, modus
- 8 memory locations for selected programme equipped with storage battery
- electronic temperature monitoring system up to 250°C, (LED display) by low temperature automatic interruption of printing process
- electronic control unit in plastic case, protection class IP 65
- central plug between hot printing equipment and control unit
- length of printing foil 305 m on all standard hot-foil printers (special model: 1000 m)
- precise and simple regulation of feed, also by running machine, comfortable snap-on system for quick change of printing foil
- high precision foil feed, even at high printing speed ( $\pm 0,1$  mm)



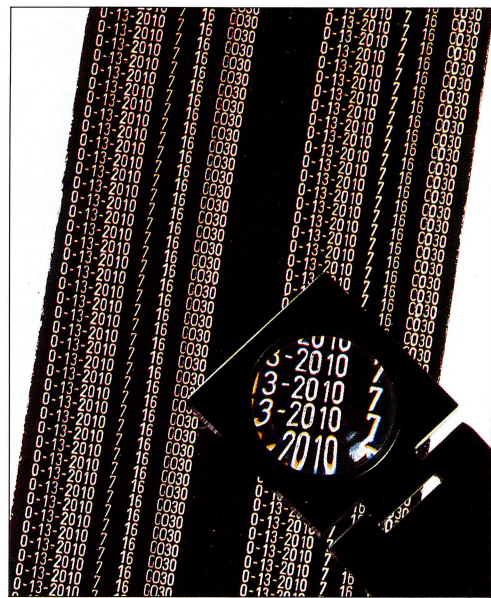
- electronic hot-foil monitoring system with foil rupture control, pre-alarm for foil end on optical display, not any product leaves the production line unprinted (product liability)
- absolutely dry operation - no cleaning efforts
- quickly changeable types, blocks and dating devices

the dübi-tech Printer is quite suitable to be installed on all kinds of packaging, production and filling machines

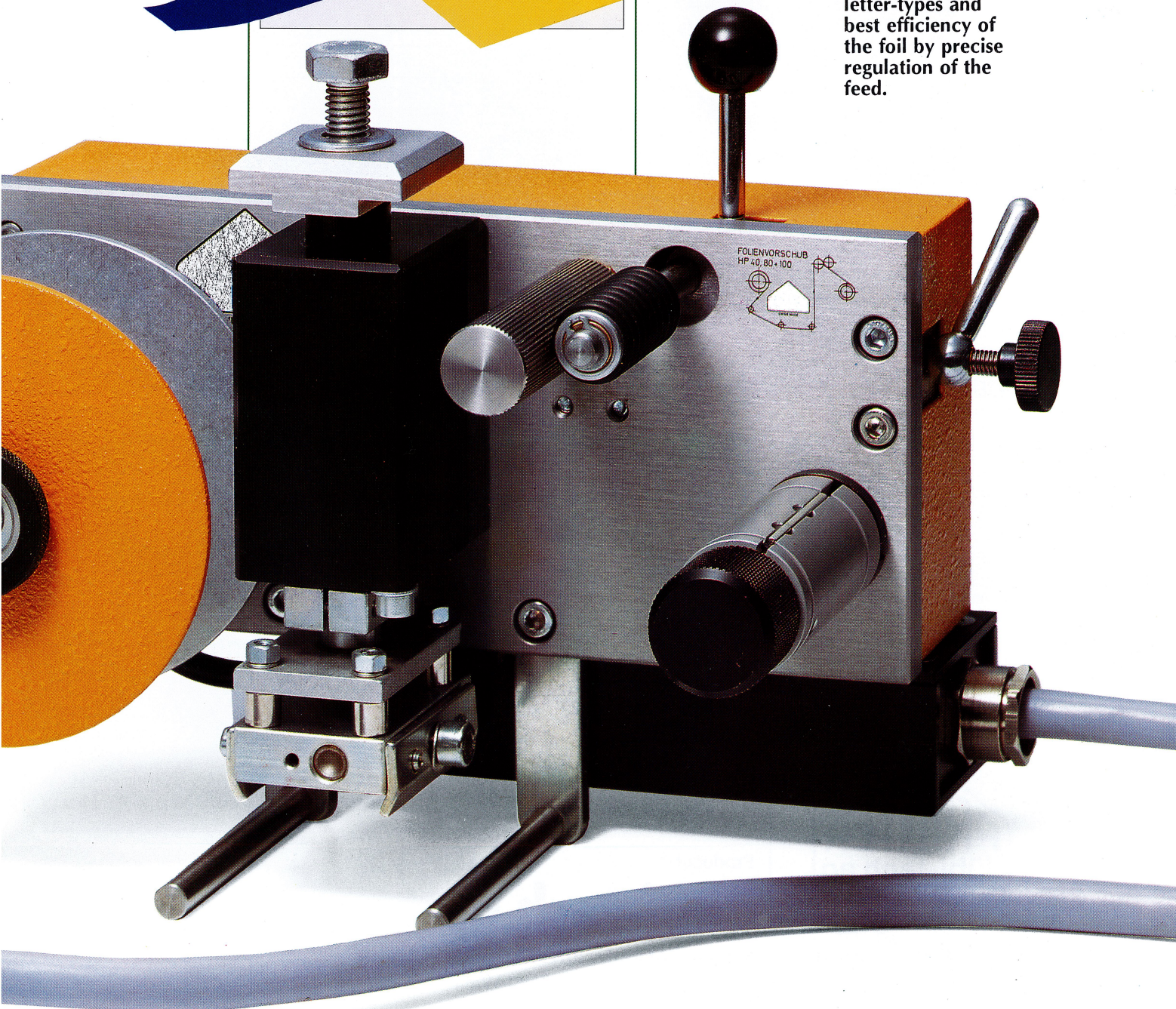




dübi-tech hot foil Printers perform in absolutely dry operation. Instead of printing ink, the system is working with many brilliant coloured foils at different widths. It can be printed on all kinds of packaging materials like: PP, PAE, PA, paper and aluminium compounds, cellphanes, card, boards, laminates etc.



perfectly focused print at all kinds of letter-types and best efficiency of the foil by precise regulation of the feed.





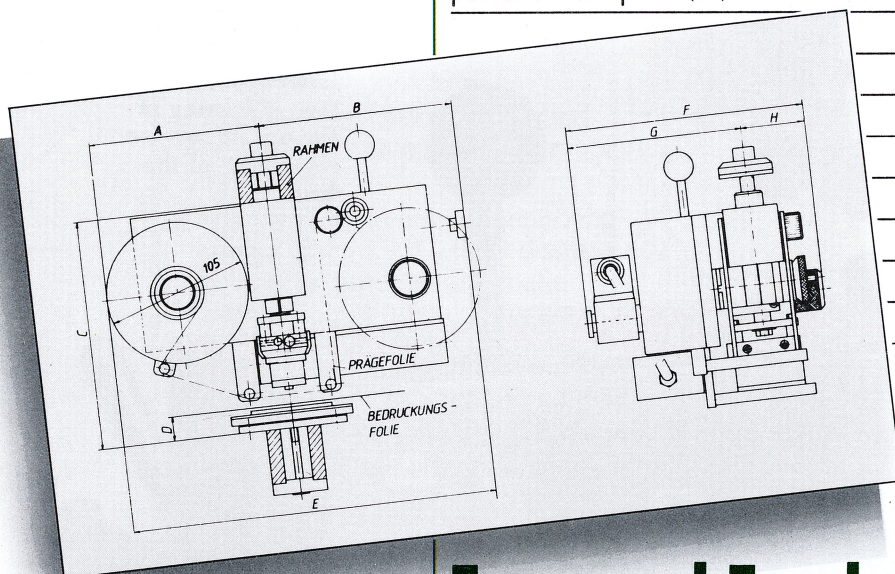
# dübi-tech Printer® hot foil printers

technical  
specification  
and dimen-  
sions of  
standard  
dübi-tech Printer  
equipment

	HP 40	HP 80	HP 100
max. printing area (mm)	25x40	50x80	100x100
working pressure (bar)	3-7	4-7	4-7
printing pressure at 6 bar (kg)	48	170	300
print head lifting (mm)	4 (7)	6 (20)	9 (25)
printing temperature (max. centigr.°C)	250	250	250
feed reel shaft for printing foil (Ø mm)	25	25	25
printing capacity (cycles/min.)	350	200	150
air consumption/cycles (NL)	0,25	0,85	1,5
ac power supply	230V 50Hz	230V 50Hz	230V 50Hz
power consumption (W)	175	300	350

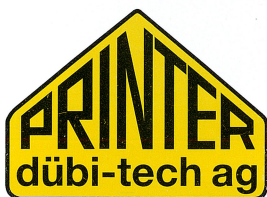
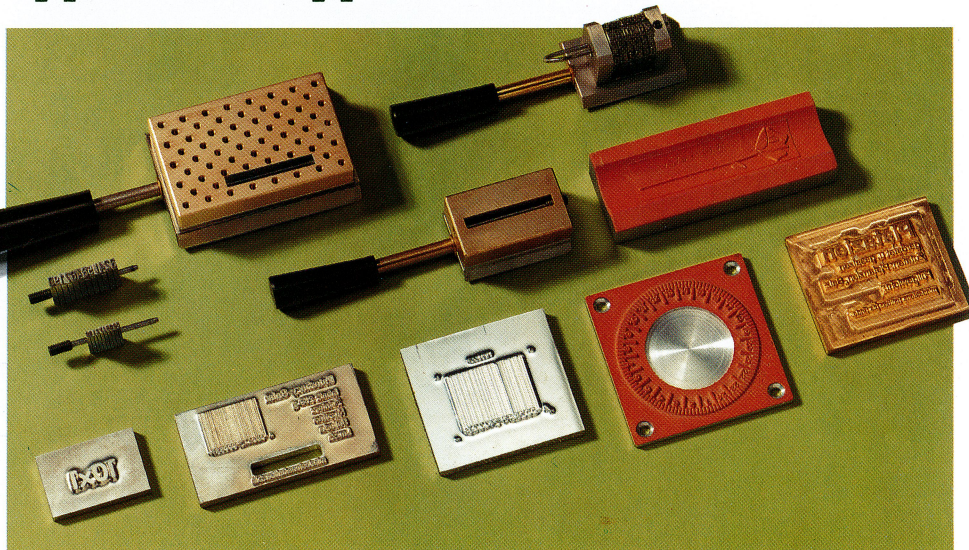
## Dimensions

(mm)	HP 40	HP 80	HP 100
A	127	153	176
B max.	173	210	225
C	168	204	204
D	22	22	22
E max.	300	363	405
F	181	219	237
G	134	149	160
H	47	70	77



## Types and Typeholders

steel types,  
dating systems  
and individual  
printing plates  
for your printing  
applications



SWISS MADE

Producer

## dübi-tech ag

Machine Manufacturer

Huebwiessstrasse 4 CH-8492 Willa

Tel. 004152 385 3225

Fax 004152 385 3897

E-mail: dtech@bluewin.ch